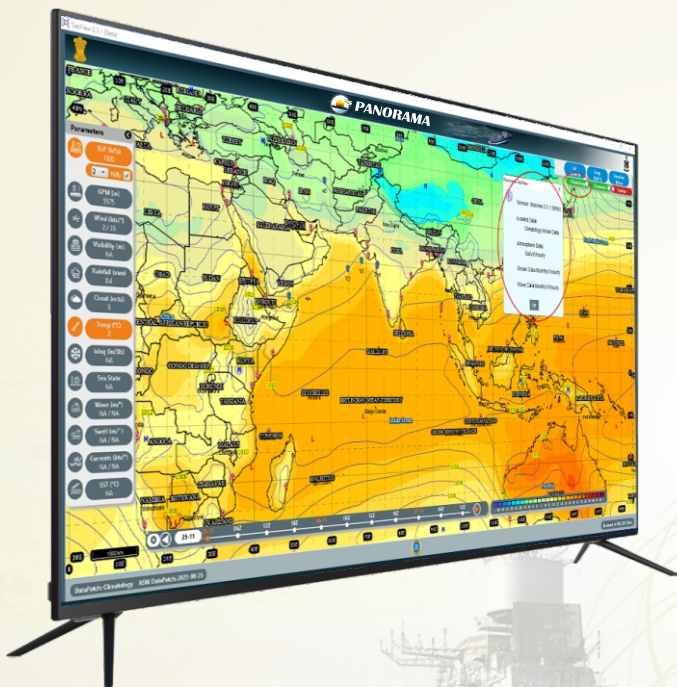


Panorama - GIS based Marine Weather Decision Support System – A 'Make in India' product

- A collaboration between C-DAC, Indian Navy, and Naval Research Board
- Successful deployment on 100 + Indian Naval ships & Submarines sailing across the globe



- 'AatmaNirbhar' product led to discontinuation of foreign commercial software
- Technology leap making Indian Defence self-reliant in technologies

INSV Tarini

"The software installed has been useful in planning our course from time to time. It gives an accurate prediction of the weather prevalent over the chosen area of operation."

- Successfully used in 'INSV Tarini' – A first all-women Indian crew to circumnavigate the globe

User Feedback

INS Vikramaditya

"The Software is easy to use and useful."

INS Shardul

"Entering way points from place A to B is a speciality of this software. This option brings attention of the user immediately on to the area of operation rather than choosing random position in vast ocean."

INS Tir

"The software is a quantum leap to with forecast upto 05 days available to the units at sea."



- State of the art scientific data compression (US Patent – US 11,341,098 B1, May 24, 2022)

Features –

- Real time weather and marine data on board system for voyage planning
- Navigation system with enroute forecast
- Fast processing of 100+ forecast parameters and observations
- 2-D and 3-D visualization
- Extreme event advisory
- Cyclone Track and Alerts
- Integrated Climatology data of 30 + years
- Marinogram, Meteogram, Tephigram, Wind Rose
- Satellite Images, Current Profile, Depth Profile
- Real time data broadcast to Indian Naval ships sailing across the globe

