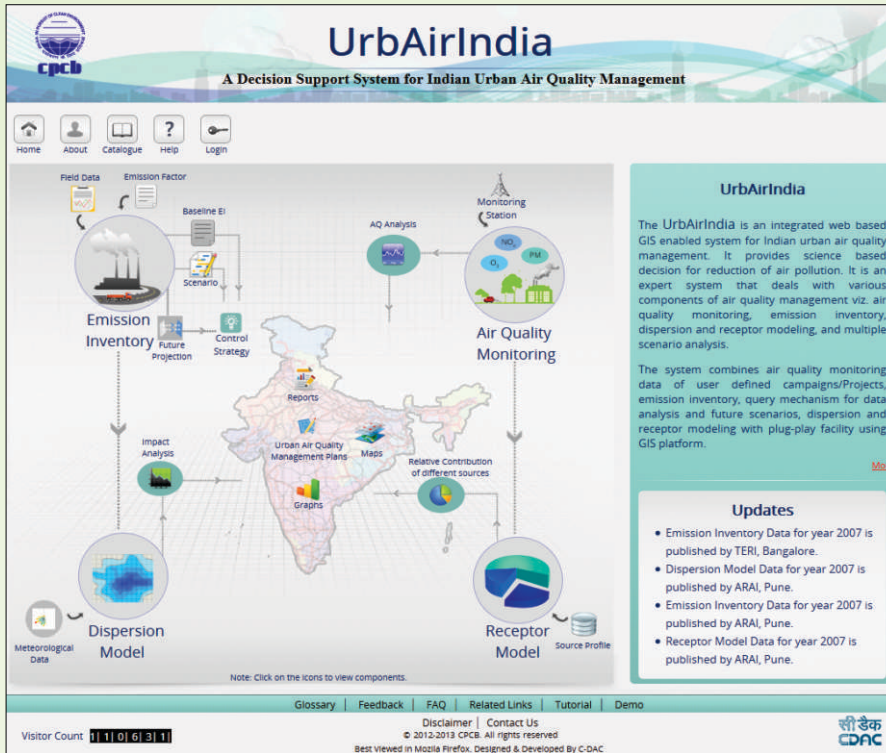


UrbAirIndia

A Decision Support System for Indian Urban Air Quality Management



UrbAirIndia
A Decision Support System for Indian Urban Air Quality Management

Home About Catalogue Help Login

Field Data Emission Factor Monitoring Station AQ Analysis

Emission Inventory Future Projection Control Strategy

Air Quality Monitoring

Reports Urban Air Quality Management Plans Maps Relative Contribution of different sources

Dispersion Model Receptor Model

Meteorological Data Source Profile

Note: Click on the icons to view components.

Glossary Feedback FAQ Related Links Tutorial Demo

Visitor Count: 11106311

Disclaimer | Contact Us
© 2012-2013 CPCB. All rights reserved
Best Viewed in Mozilla Firefox. Designed & Developed By C-DAC

UrbAirIndia

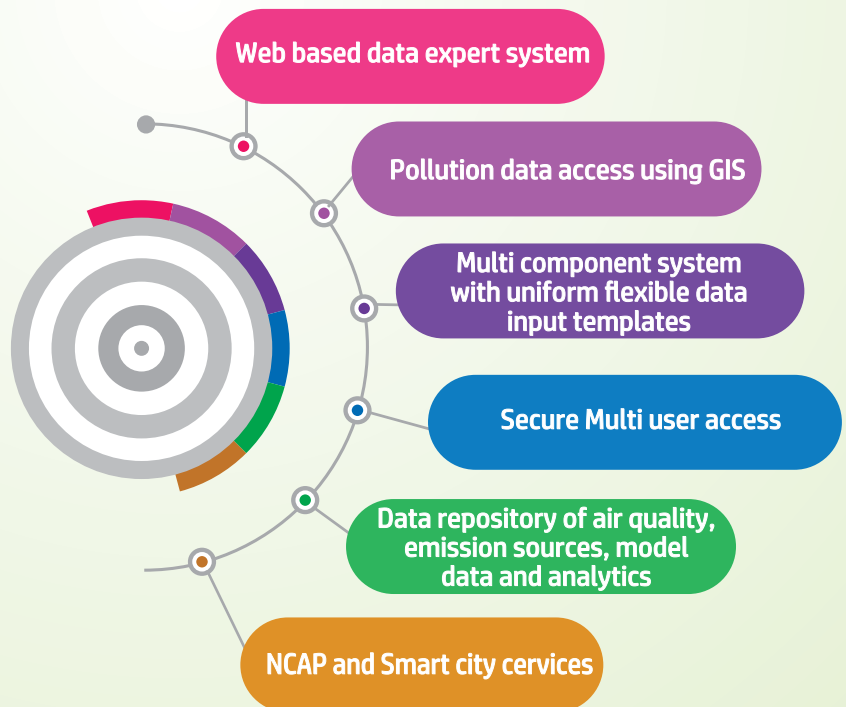
The UrbAirIndia is an integrated web based GIS enabled system for Indian urban air quality management. It provides science based decision for reduction of air pollution. It is an expert system that deals with various components of air quality management viz. air quality monitoring, emission inventory, dispersion and receptor modeling, and multiple scenario analysis.

The system combines air quality monitoring data of user defined campaigns/Projects, emission inventory, query mechanism for data analysis and future scenarios, dispersion and receptor modeling with plug-play facility using GIS platform.

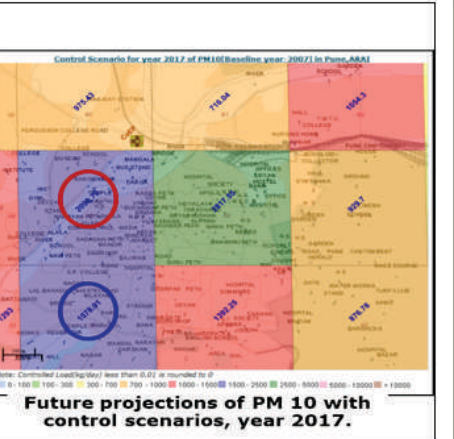
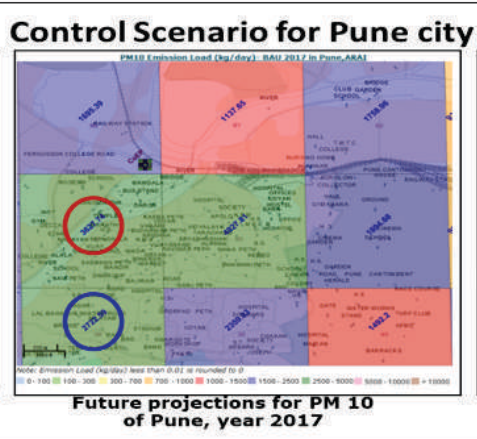
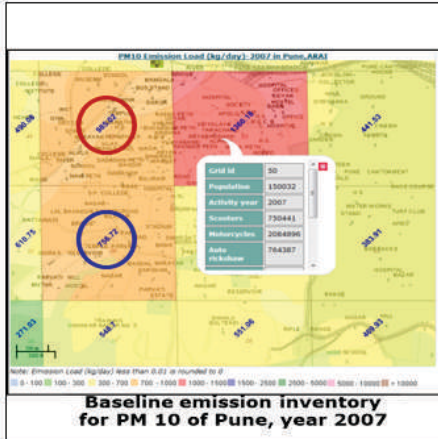
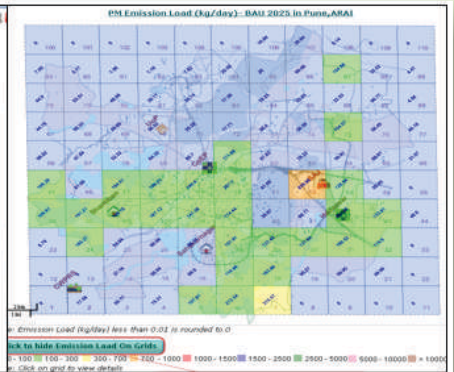
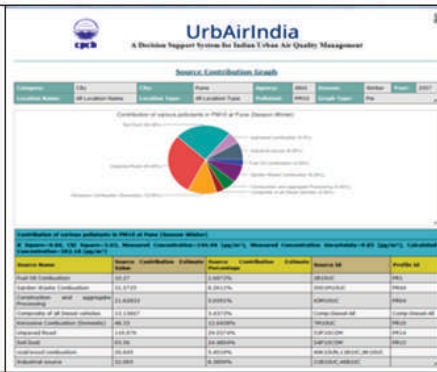
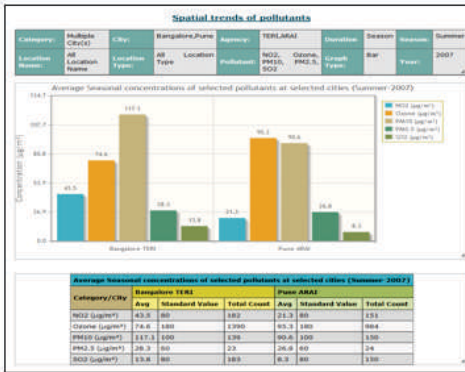
Updates

- Emission Inventory Data for year 2007 is published by TERI, Bangalore.
- Dispersion Model Data for year 2007 is published by ARAI, Pune.
- Emission Inventory Data for year 2007 is published by ARAI, Pune.
- Receptor Model Data for year 2007 is published by ARAI, Pune.

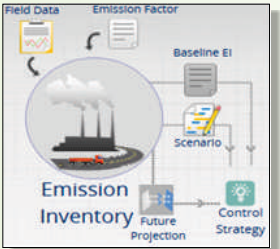
Flexible and scalable decision support system



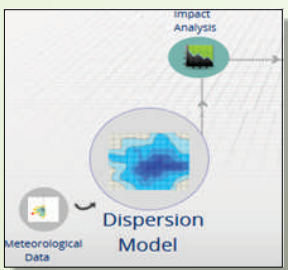
UrbAirIndia Analytics



UrbAirIndia Highlights

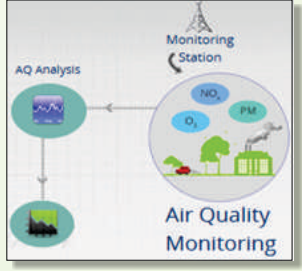


- Readily available activity data template
- Access to Emission Factors
- GIS visualization of pollutants with multi-layer city information
- Future pollution scenario analysis

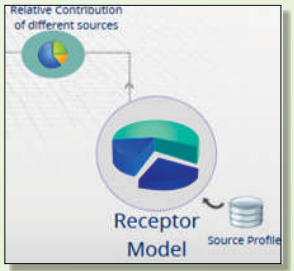


- GIS visualization of air pollution
- Air quality status information
- Air quality performance analysis

Model based future projections



- Facilitates particulate matter source apportionment
- Source profiles for various sources
- Chemical speciation analysis of particulate matter



USERS
CPCB, SPCB, Scientists,
Citizens, Industries