

ANNADARPAN

ELECTRONIC VISION FOR QUALITY ANALYSIS OF RICE

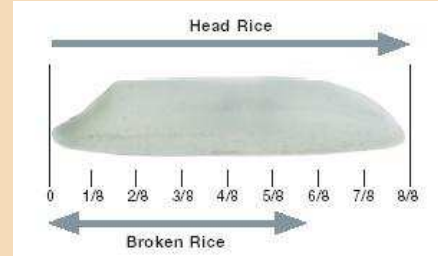


Quality of Rice is determined by:

- Physical characteristics, namely, Hulling %, Milling %, Head Rice Recovery %, Kernel Length, Kernel Breadth, L/B Ratio, Grain Chalkiness, Kernel Length after cooking, Elongation Ratio, Aroma, Moisture Contain etc.
- Chemical characteristics, namely, Water Uptake, Volume Expansion Ratio, Alkali Spreading Value (ASV), Gelatinization temperature, Amyloze Contain, Gel Consistency, etc.

Characterization of Basmati Rice based on size and shape

| Scale | Size | Length (in mm) | Shape | L/b ratio |
|-------|------------|----------------|---------|-----------|
| 1. | Extra Long | > 7.50 | Slender | > 3.0 |
| 2. | Long | 6.61-7.50 | Medium | 2.1 – 3.0 |
| 3. | Medium | 5.51-6.60 | Bold | 1.1 – 2.0 |
| 4. | Short | 5.50 or < | Round | 1.0 or < |



ANNADARPAN an image processing based non-invasive, fast & reliable solution for online rice quality analysis based on its physical appearance.

Applications:

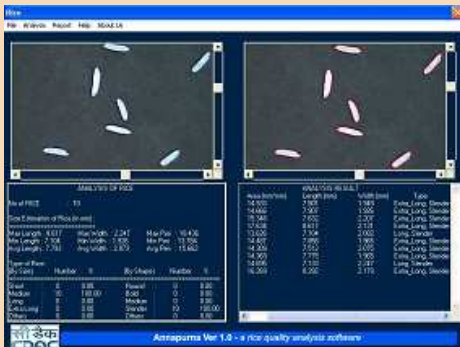
- Quality analysis of rice (Basmati & other varieties)

Target Users:

- Rice producers/Growers and Exporters.
- Agricultural Centers/ Research Laboratory.
- Food processing laboratories.
- Food Safety & Quality Laboratories.

Features:

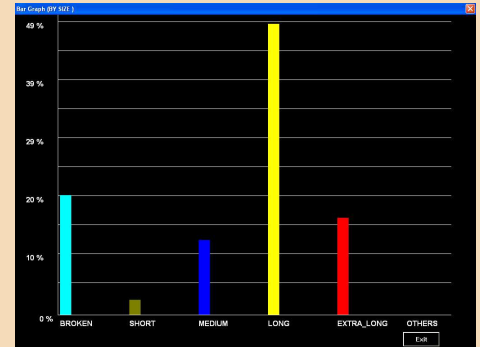
- ✓ PC based online Image capture and instant analysis of the rice sample.
- ✓ Analysis of individual rice grain.
- ✓ Graphical user Interface for easy operability.
- ✓ Bar plot for distribution of different rice grades.
- ✓ Instant report generation, print out facility.
- ✓ Compact in size for field mobility.



Software Screen for Rice Quality Analysis



Electronic Vision system for Rice Quality Analysis



Bar graph for Different Rice Grades

Dimensional Analysis of different Rice Varieties using E-Vision System

| Physical Quality Parameters | Pusa Basmati-1 | | | Basmati 370 | | |
|-------------------------------------|----------------|--------|----------|-------------|--------|----------|
| | Paddy | Brown | Polished | Paddy | Brown | Polished |
| Average Length (mm) | 10.572 | 8.262 | 7.2415 | 9.504 | 7.9123 | 7.1509 |
| Average Breadth (mm) | 2.319 | 2.240 | 1.958 | 2.407 | 2.291 | 2.223 |
| Average Area Avg (mm ²) | 23.170 | 15.229 | 14.882 | 18.150 | 16.589 | 15.767 |
| Average L/B ratio | 4.632 | 4.276 | 3.269 | 4.621 | 3.472 | 2.989 |

| Physical Quality Parameters | Gobinda Bhog | | | Radhuni Pagal | | |
|-------------------------------------|--------------|--------|----------|---------------|--------|----------|
| | Paddy | Brown | Polished | Paddy | Brown | Polished |
| Average Length (mm) | 6.498 | 4.7318 | 4.2945 | 4.636 | 4.7768 | 4.2029 |
| Average Breadth (mm) | 2.195 | 2.117 | 2.092 | 2.165 | 2.428 | 2.276 |
| Average Area Avg (mm ²) | 12.930 | 8.602 | 8.117 | 9.868 | 8.111 | 8.085 |
| Average L/B ratio | 3.083 | 2.295 | 1.970 | 2.207 | 1.981 | 1.862 |

The product is commercially manufactured, marketed and maintained by the following Technology Partner of C-DAC Kolkata

© M/s. Nagarjuna Fertilizers & Chemicals Ltd., 1, Nagarjuna Hills, Panjagutta, Hyderabad – 500 082; Ph: 040 2335067 / 23350232; E-mail: vijay@ikisan.com.



Centre for Development of Advanced Computing (C-DAC)

A Scientific Society under Department of Electronics and Information Technology (DeitY), MC&IT, Govt. of India
Bangalore Chennai Hyderabad Kolkata Mohali Mumbai New Delhi Noida Pune (HQ) Silchar Thiruvananthapuram
www.cdac.in