

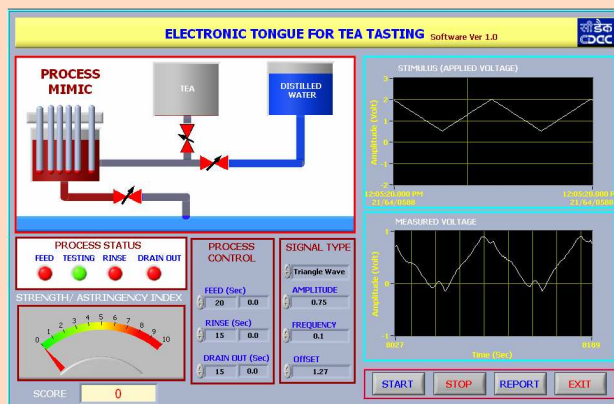
- ❶ E-Tongue for taste characterization.
- ❷ E-Tongue for monitoring of aging of tea.

Features of E-Tongue:

- ➔ Distinguishes tea samples having different astringency values with an accuracy of more than 85%.
- ➔ Complete tea testing operation in a single mouse click.
- ➔ Mimicking Tea Taster Scores by electronic means.
- ➔ Auto cleaning of electrodes by clean water.
- ➔ User-friendly software.



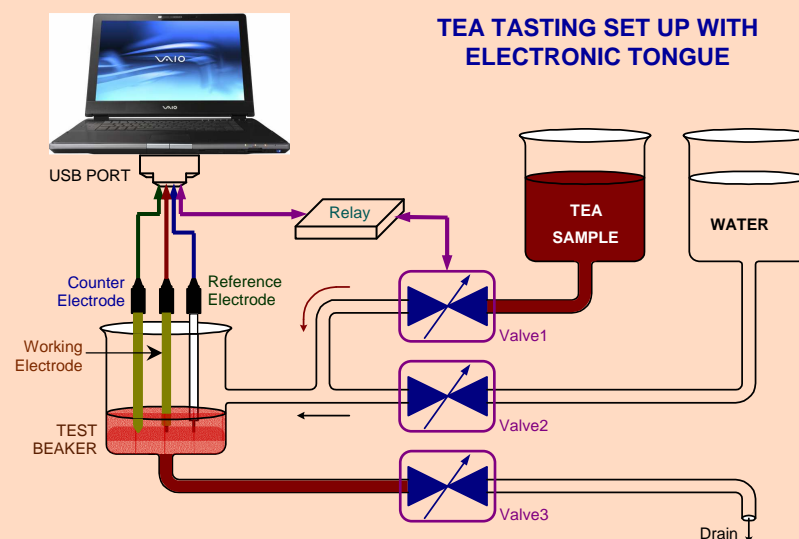
Photographs of E-Tongue System developed by C-DAC, Kolkata



Sample Software Screen of E-Tongue



Photographs of E-Tongue Sensor developed by C-DAC, Kolkata



Centre for Development of Advanced Computing, Kolkata Centre
 Plot-E2/1, Block-GP, Sector-V, Salt Lake Electronics Complex, Bidhan Nagar, Kolkata - 700 091
 Telephone: 91 33 2357 9846/3581/3950/5989/4258 Fax: 91 33 2357 5141 Website: www.cdackolkata.in

Technology transferred to:

M/s. Electronics Research & Development
 Enterprise (ERDE),
 117A, Manaharpukur Road, Kolkata – 700 026
 ToT date: 27.02.2014