

ELECTRONIC TONGUE

FOR EVALUATION OF TEA TASTE

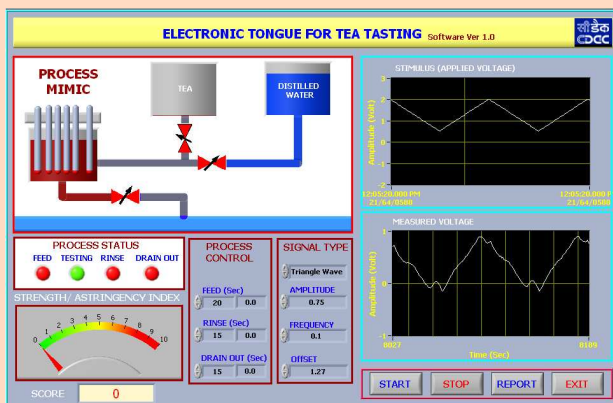
- ① E-Tongue for taste characterization.
- ② E-Tongue for monitoring of aging of tea.

Features of E-Tongue:

- ➔ Distinguishes tea samples having different astringency values with an accuracy of more than 85%.
- ➔ Complete tea testing operation in a single mouse click.
- ➔ Mimicking Tea Taster Scores by electronic means.
- ➔ Auto cleaning of electrodes by clean water.
- ➔ User-friendly software.



Photographs of E-Tongue System developed by C-DAC, Kolkata



Sample Software Screen of E-Tongue



Photographs of E-Tongue Sensor developed by C-DAC, Kolkata

